

## CommandCenter Secure Gateway

### Quick Setup Guide for CC-SG Virtual Appliance - VMware, XEN, HyperV

This Quick Setup Guide explains how to install and configure the CommandCenter Secure Gateway.

For additional information on any aspect of CommandCenter Secure Gateway, see CommandCenter Secure Gateway help, which can be accessed from the **Product Support** (<http://www.raritan.com/support>) section of Raritan's website.

---

This installation includes new deployments of the virtual CC-SG appliance on VMware, XEN, and HyperV virtual machines.

#### Download Installation Files

Log in to raritan.com to access the installation files. See Get Your License for details.

<http://www.raritan.com/support/CommandCenter-Secure-Gateway>.

The installation files are packaged in a .ZIP file. Download the .ZIP file for your virtual environment.

- VMware
- XEN
- HyperV

---

### Deploying CC-SG on VMware

#### Requirements

1. ESXi 5.0/5.1/5.5 to deploy the CommandCenter Secure Gateway virtual appliance
  - Must have a datastore with 40GB minimum available
  - Must have 2GB memory available
  - 2 physical NICs in the server. (ESXi networking refers to these as "vmnic".)
  - A high availability cluster with access to shared storage is recommended. Fault tolerance may also be used. See CC-SG Admin Help "Using VMware High Availability or Fault Tolerance with a CC-SG Virtual Appliance".
2. Client computer running vSphere Client 5.0/5.1/5.5
3. The virtual appliance .OVF file, which is available at <http://www.raritan.com/support/commandcenter-secure-gateway>. See Download Installation Files for details.
  - **CommandCenter Secure Gateway Virtual Appliance** link: You must log in to the Raritan Software License Key Management site to view this link. See Get Your License.

---

#### Install CommandCenter Secure Gateway on VMware ESXi 5.5

1. Connect to the ESXi 5.5 from your client computer using vSphere 5.5.
2. Log in as a user that has permission to create, start, and stop virtual machines.
3. Choose File > Deploy OVF Template.
4. Select Deploy From File then click Browse to go to the directory where you unzipped the files. Select the .OVF file. Click Next.
5. Details about the virtual machine that will be created display. You can change the default name of the virtual machine. Click Next.
6. Select the inventory location. Click Next.
7. Select the Host where you want to deploy the CommandCenter Secure Gateway. **A host that is part of a high availability cluster is recommended for failover protection.** Click Next.
8. If you selected a cluster, select the specific host. Click Next.

9. Choose the datastore where all files will be stored. Make sure the datastore has 40GB free. Click Next.

Note: Datastore availability is critical for proper and reliable operation. The datastore should be highly available with redundant network access and routine backup.

10. Choose the network your CC-SG is being deployed on. Click Next.
11. View the summary then click Finish. Wait several minutes while the virtual machine is created.
12. Power on the virtual machine and launch the console. For next steps, go to **Log in to Diagnostic Console to Set CC-SG IP Address** (on page 11).

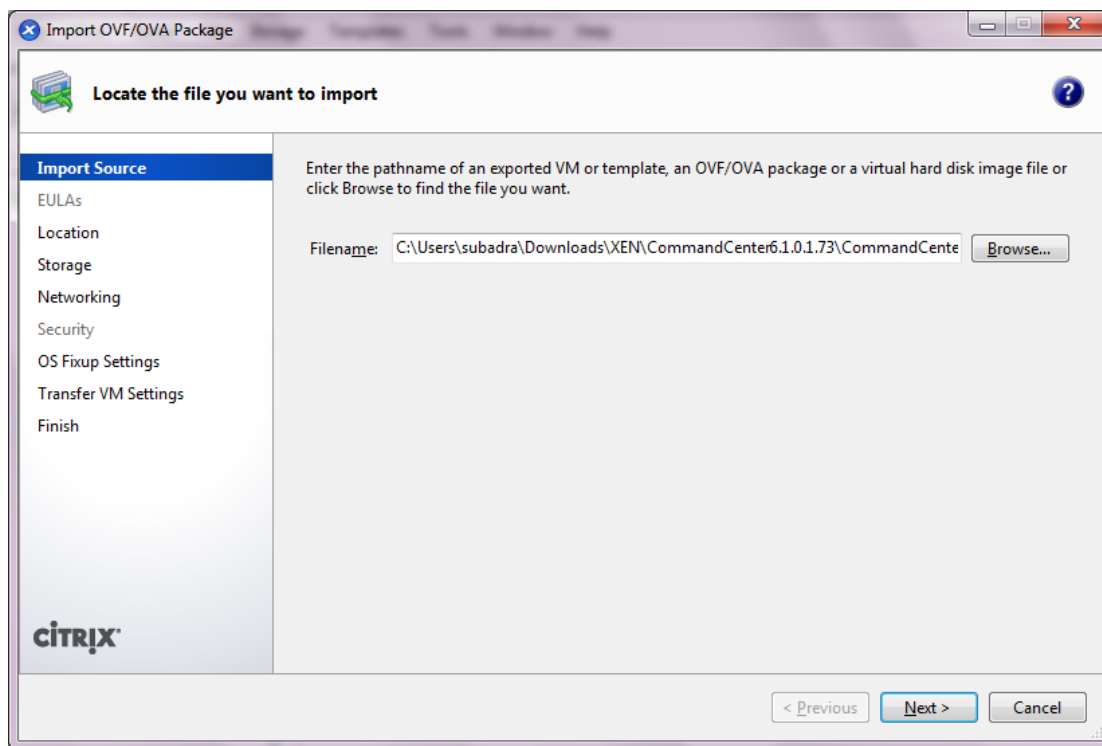
## Deploying CC-SG on XEN Virtual Server

### Requirements

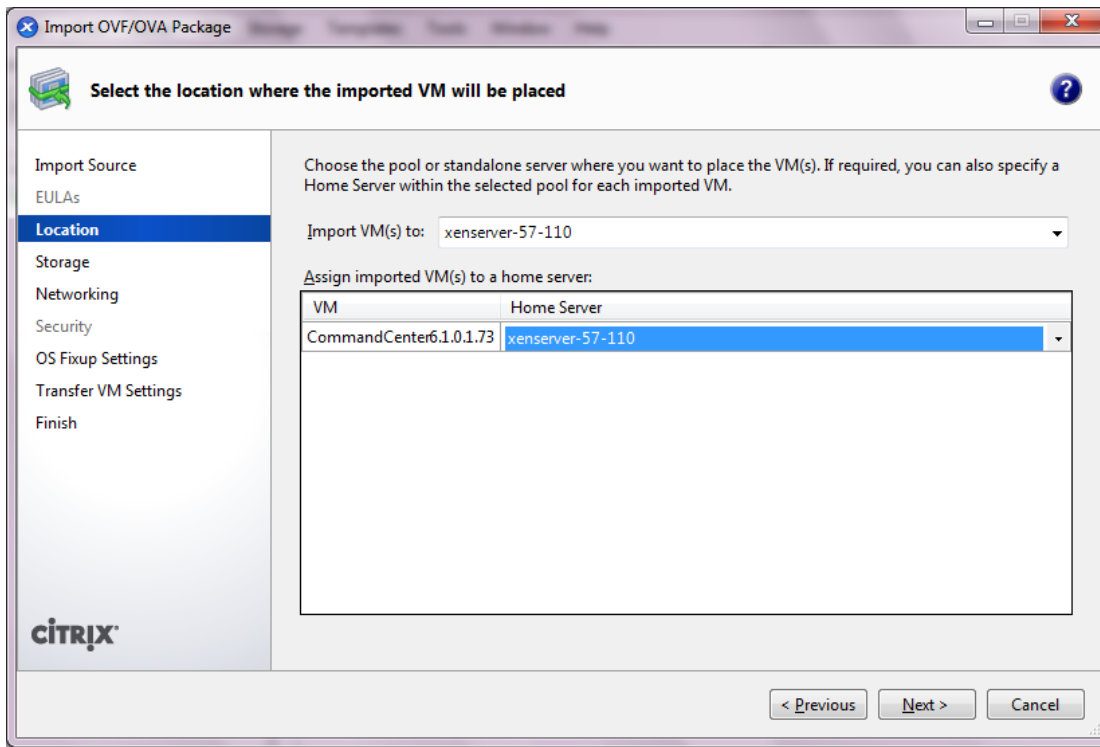
1. Xen server is running on a machine that supports hardware virtualization and is enabled in BIOS.
2. XenCenter Windows Management Console is running on a client machine that can access the XEN server.

### Install CC-SG on a XEN Server

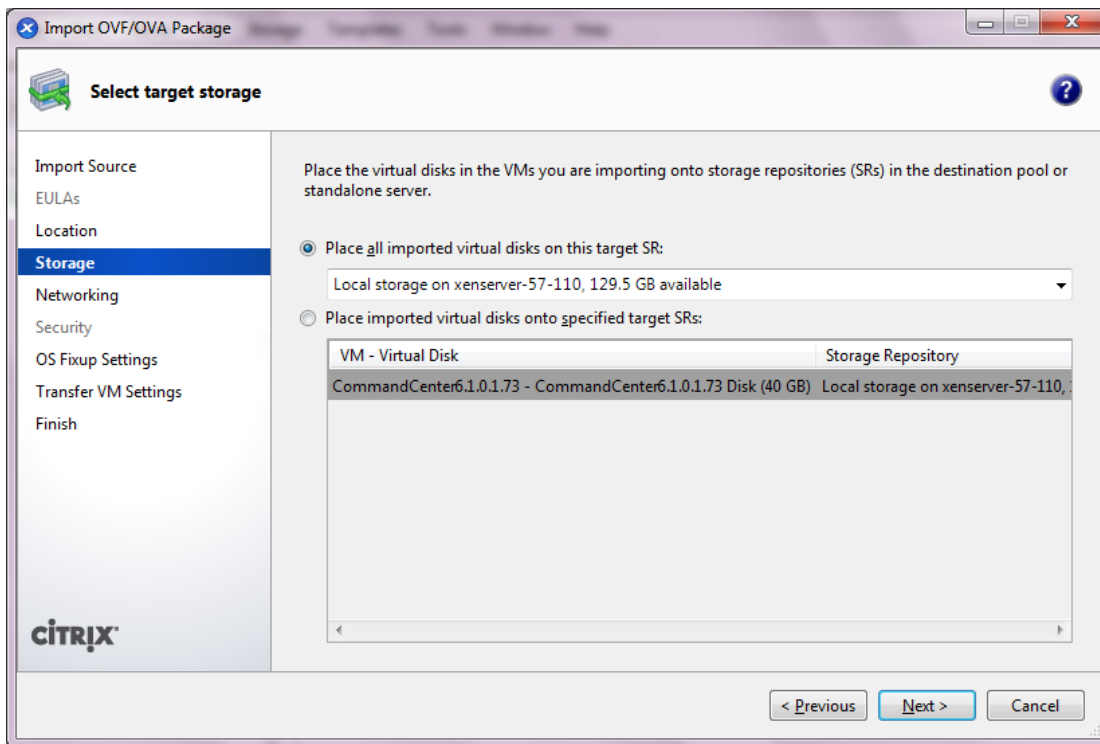
1. Extract the OVF and VHD files from the CC-SG release package to the client machine where XenCenter Windows Management Console is installed.
2. Launch XenCenter Windows Management Console.
3. If needed, add the installed Xen server to XenCenter.
4. Once the XEN server is added, right-click on the XEN server and choose "Import...".
5. Click Browse, select the OVF file, and click Next.



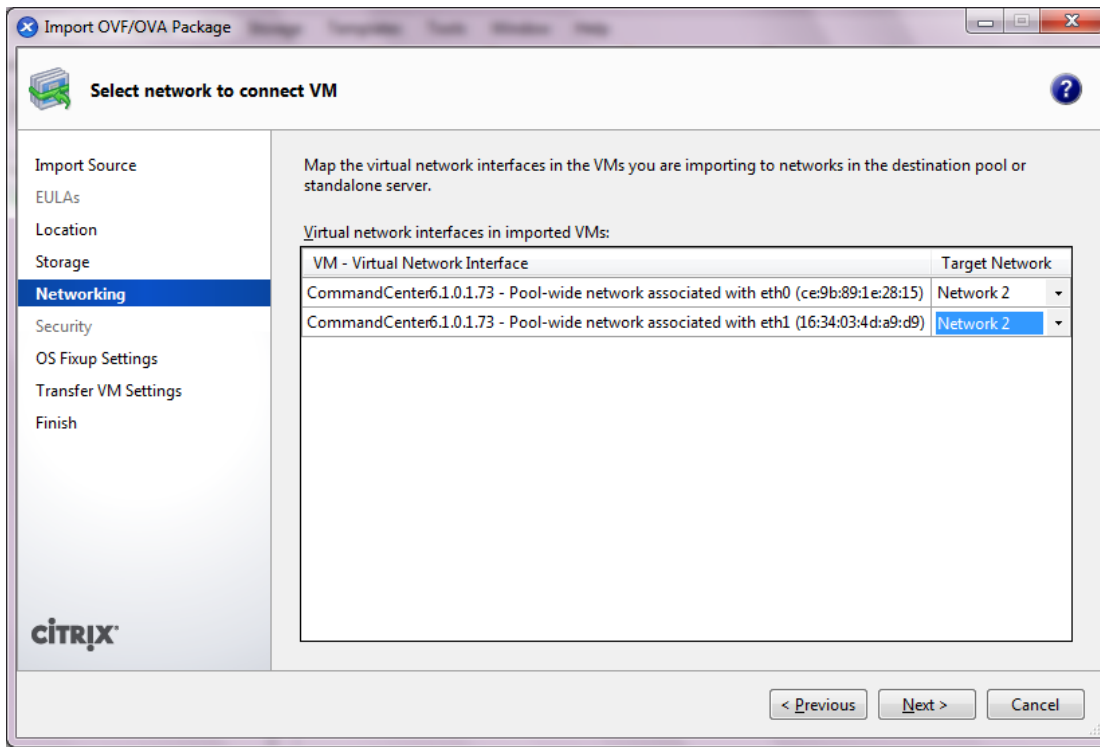
6. Select the XEN server as the location for the imported virtual machine.



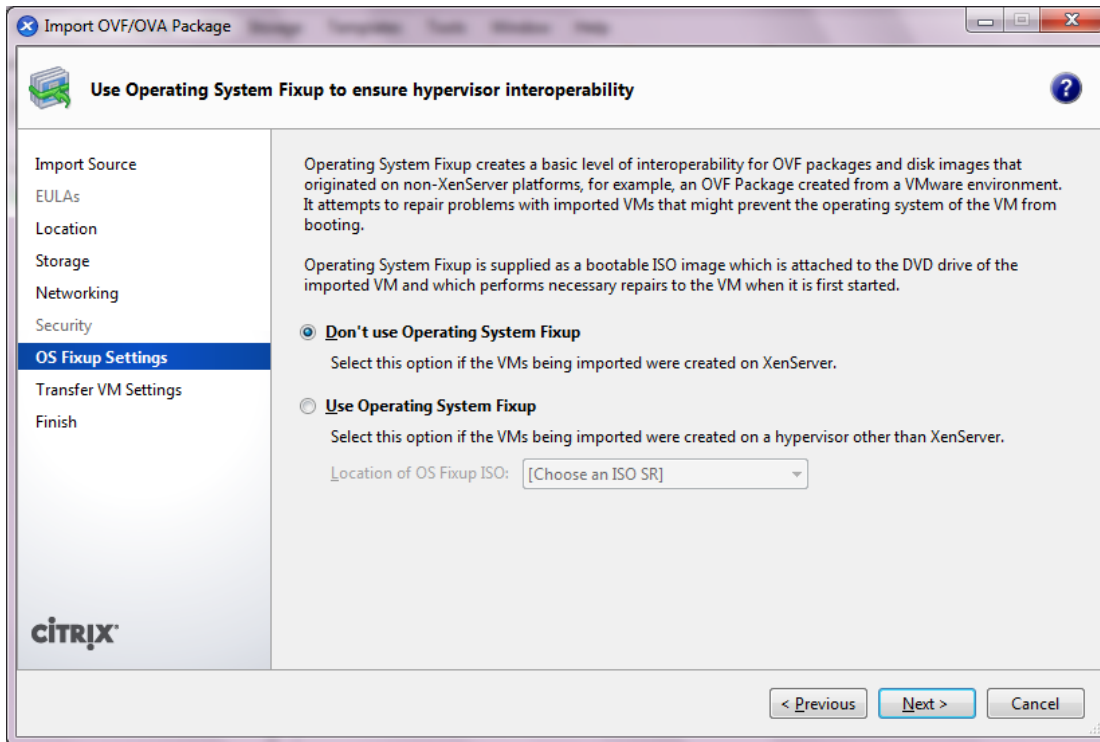
7. Specify the virtual disk. Local storage is shown in the example.



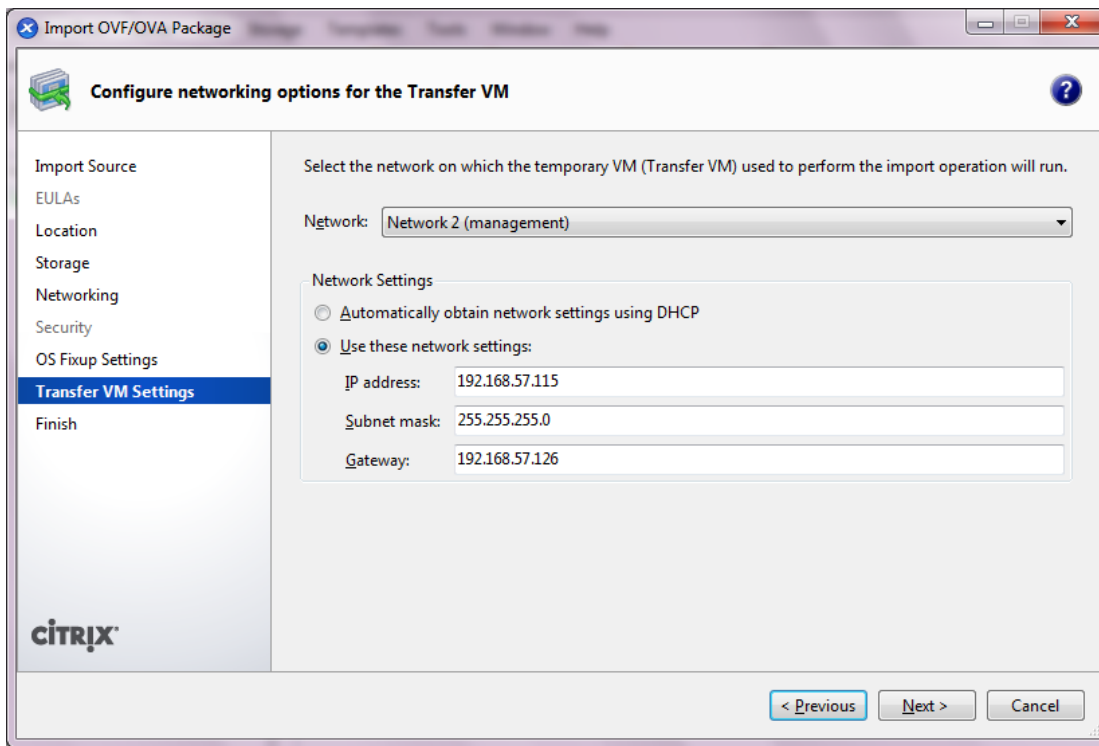
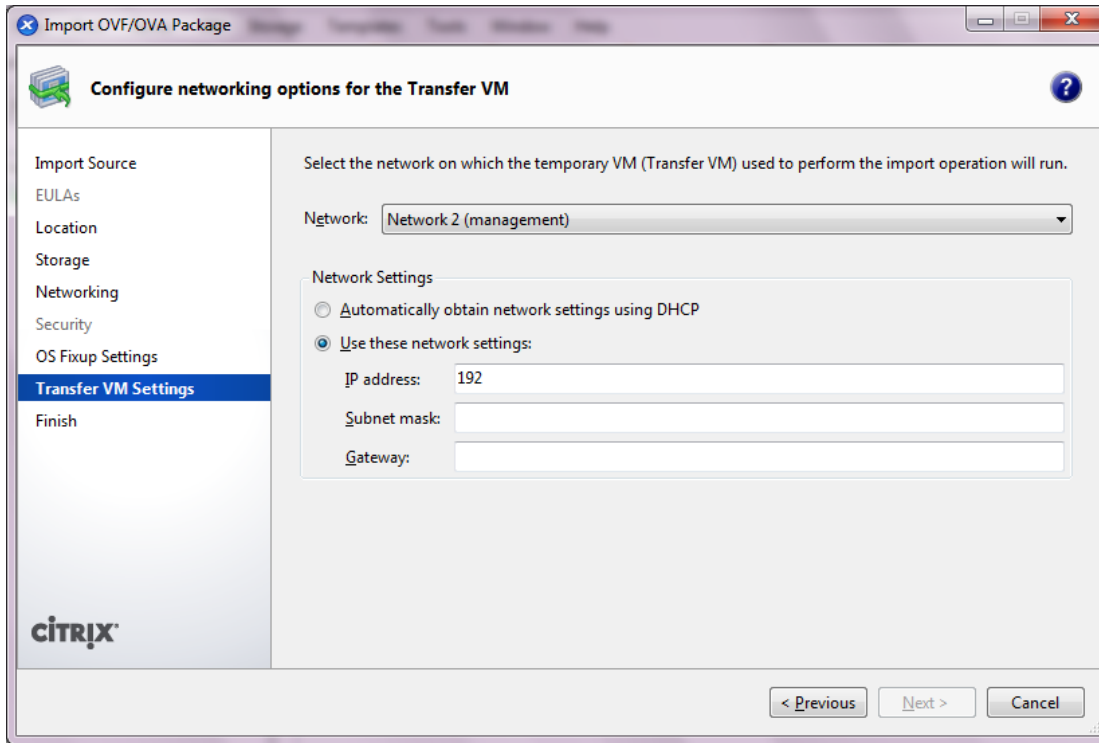
8. Choose the Network Connection for both the CC-SG interfaces.



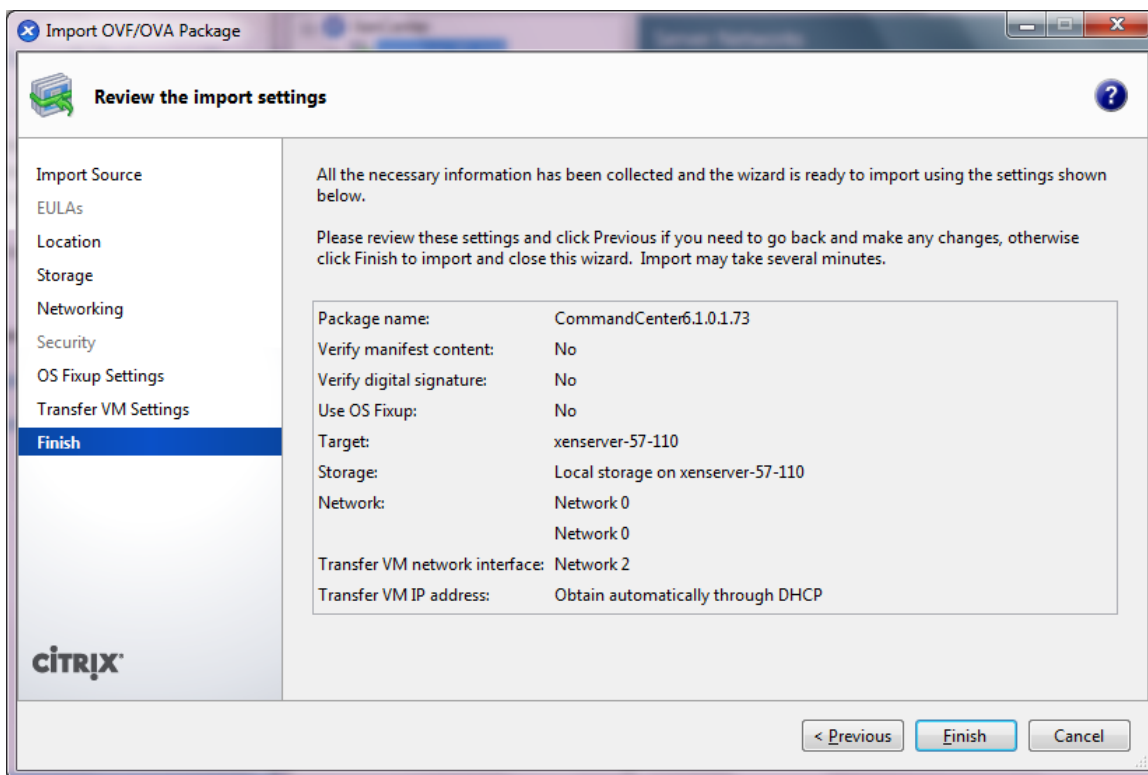
9. Use the default option "Don't use Operating System Fixup". The CC-SG VM was created on XEN server.



10. Configure networking options. You can configure with DHCP or Static. This configuration does not impact network parameters of CC-SG. Once the CC-SG VM is running, you can configure CC-SG network parameters from CC-SG admin console.



11. Once network is configured, click Next and review. Click Finish.



12. It will take 20-25 minutes for the CC-SG VM to be created. Start the VM and launch the console. For next steps, go to **Log in to Diagnostic Console to Set CC-SG IP Address** (on page 11).

## Deploying CC-SG on Hyper-V

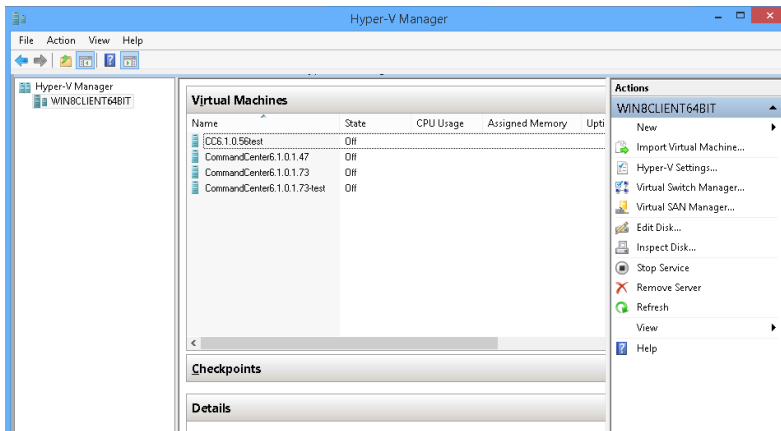
### Requirements

- Hyper-V feature is enabled on a Windows 8.0/8.1/2012 client.
- Hyper-V Manager can be accessed.

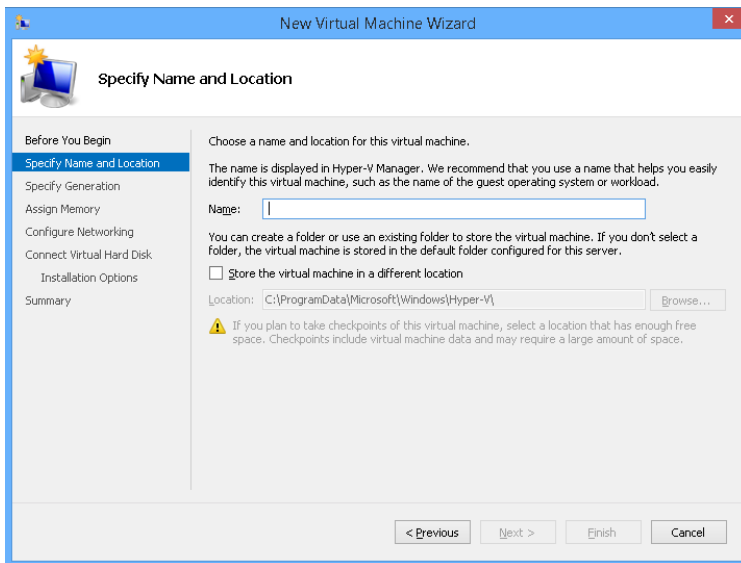
### Install CC-SG on Hyper-V

1. Extract the VHDF file from the CC-SG installation zip file.

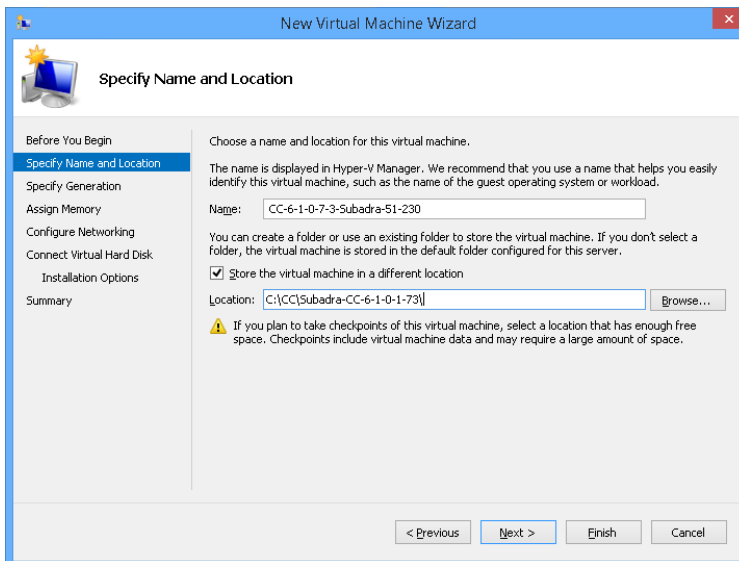
2. Launch the Hyper-V manager. Windows 8.1 HyperV manager is shown in the example.



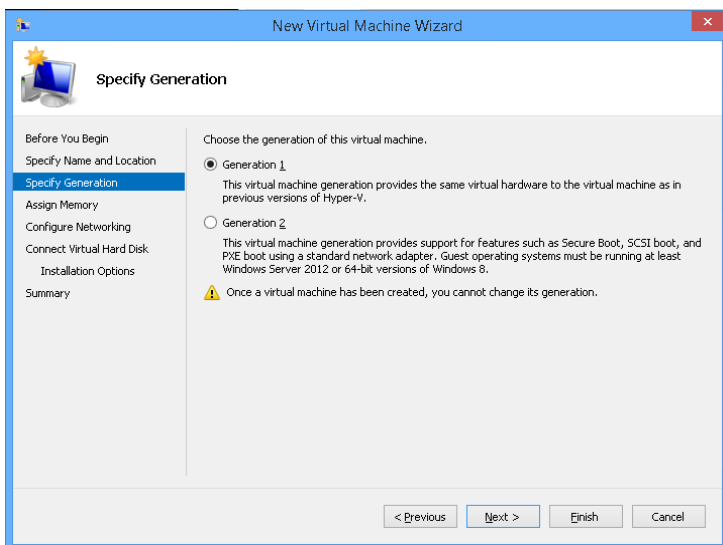
3. In the Action list, choose New> Virtual Machine to open the New Virtual Machine wizard.



4. Enter a name for the VM, and choose a location to store the VM. Click Next.

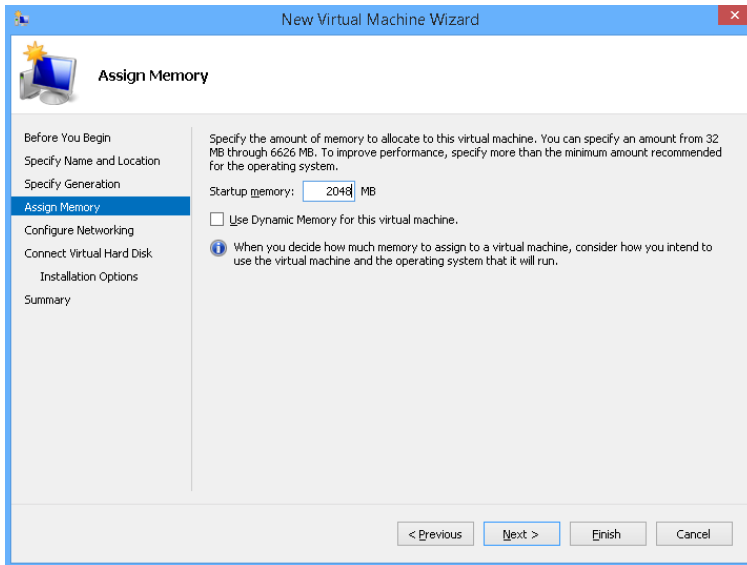


5. In the Specify Generation page, select Generation 1 only. CC-SG does not support Generation 2. Click Next.

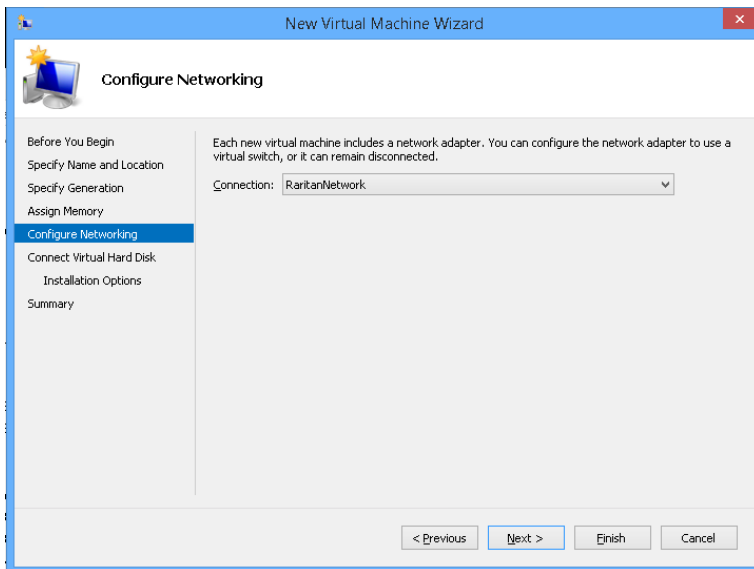




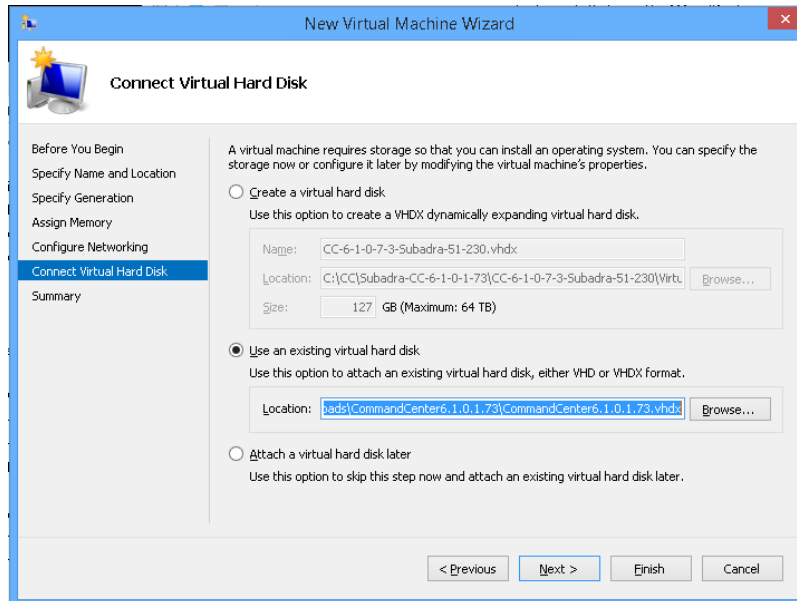
6. In the Assign Memory page, change the default value of 512 MB to recommended memory of 4GB. Minimum value is 2GB. Click Next.



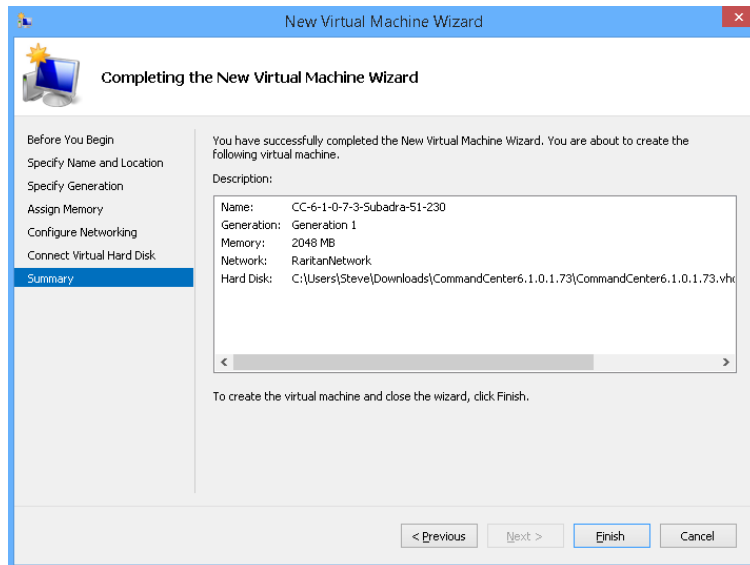
7. In the Configure Networking page, select the network configuration in your client environment. Click Next.



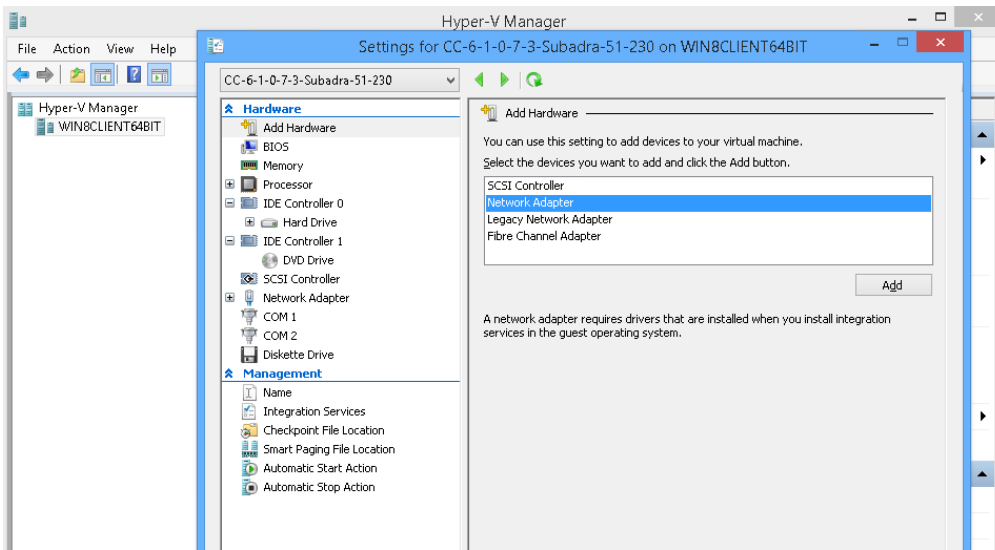
- In the Connect Virtual Hard Disk page, select "Use an existing virtual hard disk", then click Browse to select the .VHDX file extracted earlier. Click Next.



- A summary of the VM displays. Click Finish.



10. Select the newly created VM, then click Settings and add another network.



11. Start the new VM, and launch the console. For next steps, go to **Log in to Diagnostic Console to Set CC-SG IP Address** (on page 11).

### Log in to Diagnostic Console to Set CC-SG IP Address

1. Log in as *admin/raritan*. Usernames and passwords are case-sensitive.
2. You will be prompted to change the local console password.
  - a. Type the default password (*raritan*) again.
  - b. Type and then confirm the new password. The new password must be a strong password consisting of at least eight characters that are a combination of letters and numbers.
3. Press CTRL+X when you see the Welcome screen.

```
File Operation
CC-SG Administrator Console: Welcome:
Welcome to the Administration (Admin) section of the Diagnostic Console

The menus in this area will let you:
- Do initial system set-up / installation.
- Configure and control Diagnostic Services.
- Perform emergency repairs.
- Collected some diagnostic information.

There are more navigation aids in the Admin Console.
The top title bar offers you a series of menus and sub-menus.
Short-cut to this menu bar is <ctl+X> (or using your mouse).

SN:ACC8605010, Ver:6.0.0.5.0 [Created:Thu Mar 2014-03-27 11:01:19 EDT -0400]
Help: <F1> // Exit: <ctl+Q> or <ctl+C> // Menu (Top-bar): <ctl+X>
```

4. Choose Operation > Network Interfaces > Network Interface Config. The Administrator Console appears.
5. In the Configuration field, select DHCP or Static. If you select Static, type a static IP address. If needed, specify DNS servers, netmask, and gateway address.
6. Select Save. Wait a few minutes as CC-SG restarts.

### Default CC-SG Settings

IP Address: 192.168.0.192

Subnet Mask: 255.255.255.0

Username/Password: admin/raritan

## Log in to CC-SG

1. Launch a supported browser and type the URL of the CC-SG: `https://<IP address>/admin`.  
For example, `https://192.168.0.192/admin`.

---

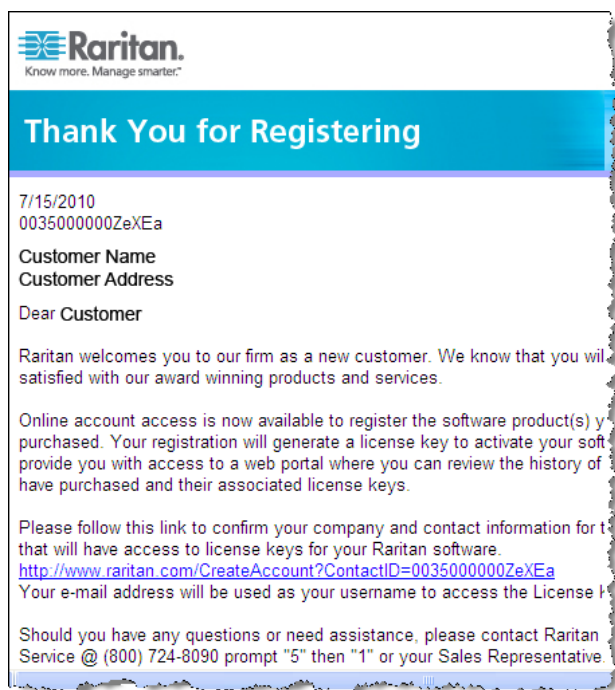
Note: The default setting for browser connections is HTTPS/SSL encrypted.

---

2. When the security alert window appears, accept the connection.
3. You will be warned if you are using an unsupported Java Runtime Environment version. Follow the prompts to either download the correct version, or continue. The Login window appears.
4. Type the default username (*admin*) and password (*raritan*) and click Login.  
The CC-SG Admin Client opens.

## Get Your License

1. The license administrator designated at time of purchase will receive an email from Raritan Licensing Portal from the email address `licensing@raritan.com`, with the subject line Thank You for Registering.



2. Click the link in the email to go to the Software License Key Login page on Raritan's website. Create a user account and login. The username is your email address. The licensing account information page opens. Your license files will be available shortly.
3. Check your email for another message from Raritan Licensing Portal from the email address `licensing@raritan.com`, with the subject line Your Raritan Commandcenter SG Software License Key is Available.

## Thank You for Registering

7/15/2010  
0035000000ZeXEa

**Customer Name**  
**Customer Address**

Dear Customer

This is an important email regarding your recent Raritan CommandCenter Sec purchase. Your Software License Key may now be generated. This License required to activate this Software Product.

You can access that license key(s), as well as review the history of Raritan's products that you have purchased with their associated license keys, at our website here - <http://www.raritan.com/licensing>.

4. Click the link in the email to go to the Software License Key Login page on Raritan's website and login with the user account just created.
5. Click the Product License tab. The licenses you purchased display in a list. You may have only 1 license, or multiple licenses.
6. To get each license, click Create next to the item in the list. If you have more than 1 license, such as a base license of CCSG128-VA and an add-on license of CCL-1024, create the base license first.

---

Note: If you are migrating from a license server configuration, to not-served configuration, you must get rehosted licenses. You cannot use the old license files. Make sure you create and download the new licenses. If you do not see new licenses listed, contact Raritan Technical Support to request rehosted licenses that will allow you to operate CC-SG in not-served configuration.

---

7. Select New Deployment - For Use Without License Server (Non Served).
8. Enter the Host ID of the virtual machine where you installed the CC-SG virtual appliance.
  - For new deployments, copy the Host ID from the Administration > License Management page in the Admin Client, in the CC-SG Host ID field at the top of the page.
  - For users migrating from a license server configuration, copy the Host ID from the Status Console. Launch an SSH client, specify the IP address, or IP hostname of the CC-SG virtual machine. Specify 23 for the port. Default SSH port is 22. If you do not change the port to 23, the SSH client accesses the command line interface of CC-SG, not the status console. Click to connect. At the login prompt, type `status`. Copy the 40 character Host ID. In SSH clients, you may need to copy the whole console page and paste in a text document, then copy the Host ID from there. Leave the status console open to verify status later when installing your new license.
  - Sample Host ID: 98A77180737E600FVP9FF1707ED0CE2154CF7FD6
9. Click Create License. The details you entered display in a pop-up. Verify that your Host ID is correct.

---

Warning: Make sure the Host ID is correct! A license created with an incorrect Host ID is not valid and requires Raritan Technical Support's help to fix.

---

10. Click OK. The license file is created.
11. Click Download Now and save the license file.

## Install and Check Out Your License

1. Choose Administration > License Management.
2. Click Add License.
3. Read the license agreement and scroll down the whole text area, then select the I Agree checkbox.
4. Click Browse, then select the base virtual appliance license file. The file name should contain "CCSG128VA".
5. Click Open.
6. The feature included in the license display in a list. Continue adding license files as needed for other features.
7. Select the CCSG128-VA base license then click Check-Out to activate it.

8. To activate Add-On licenses, select each license then click Check-Out.

---

### **Additional Information**

For more information about CommandCenter Secure Gateway and the entire Raritan product line, see Raritan's website ([www.raritan.com](http://www.raritan.com)). For technical issues, contact Raritan Technical Support. See the Contact Support page in the Support section on Raritan's website for technical support contact information worldwide.

Raritan's products use code licensed under the GPL and LGPL. You can request a copy of the open source code. For details, see the Open Source Software Statement at (<http://www.raritan.com/about/legal-statements/open-source-software-statement/>) on Raritan's website.